

### TREATMENT GUIDE

Combine modes to create a treatment that suits you

Each mode takes up to 5 minutes	Cleanse	Moisturise	Boost
<b>5 mins</b> MINI TREATMENT Moisturise-only treatment for busy lives		●	
<b>10 mins</b> SIMPLE TREATMENT Simple cleansing & moisturising	●	●	
<b>15 mins</b> DAILY TREATMENT For standard everyday care	●	●	● Moisturiser
<b>15 mins</b> BOOSTER TREATMENT Thorough cleansing treatment for once/twice a week	●	●	● Sheet Mask

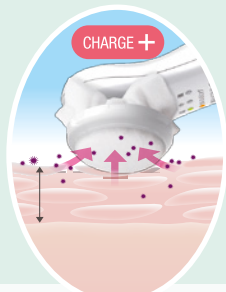
You choose the length of each mode – maximum 5 minutes

Choose from Low, Medium or High intensities to match your skin sensitivity

### 3 STEPS TO YOUNG AND BEAUTIFUL SKIN

#### CLEANSING

Removes fine dirt trapped in your pores using the natural power of electricity.

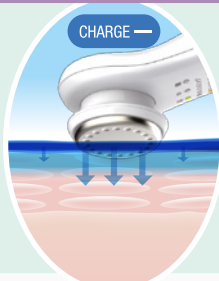


After removing your make-up, apply your regular cleanser/toner to the cotton pad on the head of the device then use.

#### MOISTURISING

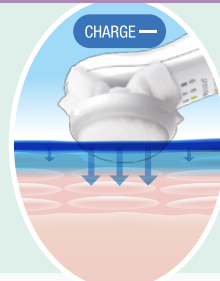
Allows your moisturiser to absorb deep into the skin for more effective moisturising.

##### WITHOUT COTTON PADS



Spread your regular moisturising lotion/cream/gel/serum evenly over the titanium metal head of the device, then use directly on your skin.

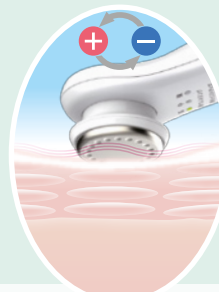
##### USING COTTON PADS



If your regular moisturiser is clear, apply it to a fresh cotton pad on the device then use.

#### BOOST

Boosts the effects of moisturisers and sheet masks using fine vibrations and gentle rotation of the electrode polarity.



Apply your moisturiser or sheet mask to your whole face, then use the device directly on top.



# PRO



#### Front Plate (Titanium)

The smooth head design allows for easy and efficient application of lotion to skin.

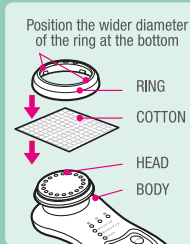
#### Rear Plate (Titanium)

Please make sure to keep contact with this plate whilst holding the device.



The device is not fully charged out of the box.  
Please connect to the supplied Power Adaptor for 5 hours until fully charged.  
You can also use this device whilst charging.

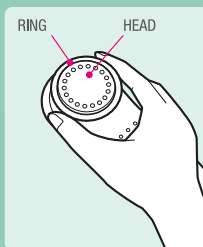
## 1 How to attach cotton pads & how to remove the ring after use:



### To Attach:

Peel off the sticker from the titanium head.  
Cover the head with a cotton pad and fix down with the supplied ring.  
Please position the wider diameter of the ring at the bottom.

\*NB. This ring is not reversible



### To Remove

Push the wider parts of the ring to remove from the head

## 2 Wash your face of any make up and residual dirt

## 3 Turn the device on with the power button, and select modes with the mode button

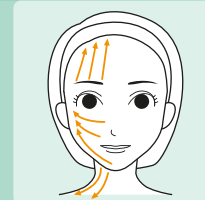
STEP	MODE	HOW TO USE	RECOMMENDED PRODUCTS	COTTON?	VIBRATION?	MODE TIME?	RECOMMENDED FREQUENCY
1	CLEANSER Remove dirt from pores	Apply your regular cleanser/toner liberally to the cotton pad and gently massage in. *NB. Please remove make up prior to use.	Cleansers & Toners	Yes	Yes	Up to 5 Minutes	Once a day
2	MOISTURISE Moisturising care	Spread your regular moisturising lotion/cream/gel/serum evenly over the titanium metal head of the device, then use directly on your skin.	Moisturising lotion, cream, gel or serum	No	Yes	Up to 5 Minutes	Once a day
		If your regular moisturiser is clear, apply it to a fresh cotton pad on the device, then use.	Clear / light moisturiser	Yes			
3	BOOST Boosts the effects of moisturisers or sheet masks for extra hydration	Spread your moisturiser evenly over your face, then use the device directly on top.	Moisturiser	No	Yes	Up to 5 Minutes	Once a day
		Apply a sheet mask to your face then use the device directly on top.	Sheet Mask				Once/twice a week

### ABOUT THE SKIN DETECTION FUNCTION

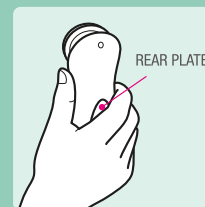
This product operates through the human body using positive and negatively charged ions through electrical charges. The device will not operate properly without hand contact on the rear plate and contact from the front titanium head to your face.

## 4 Place the front titanium head gently on your face and slide slowly outwards from the centre.

If the device is not vibrating during use, this means it is not operating.  
If the device does not vibrate for 5 minutes, it will automatically switch off (auto-off function).

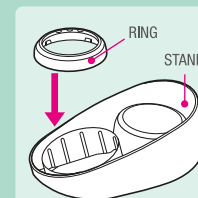
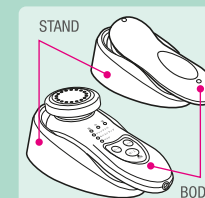


## 5 Please maintain contact with the rear plate when gripping the product. If you do not touch the rear plate properly, the device will not vibrate (skin detection function).



## 6 Place the device in the supplied stand, and store in a place of low humidity and dust.

The stand can hold the main device, and also the supplied rings.  
Please do not place the stand in direct sunlight, or near to heated appliances. (May result in discoloration or warping of the product).



DO NOT WASH WITH WATER

